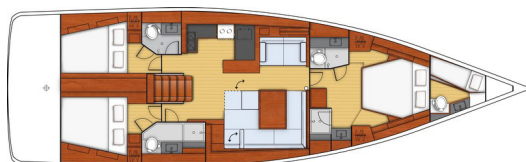




3 cabins + 2 heads



3 cabins + 3 heads + Forepeak cabin (Optional equipment)

## GENERAL SPECIFICATIONS

• L.O.A	16,78 m	55'1"
• Hull length	15,99 m	52'6"
• L.W.L.	15,16 m	49'9"
• Beam	4,96 m	16'3"
• Deep draught	2,30 m	7'7"
• Deep ballast weight	4 230 kg	9,326 lbs
• Shallow draught	1,91 m	6'3"
• Shallow ballast weight	4 560 kg	10,053 lbs
• Very shallow draught	1,56 m	5'1"
• Ballast weight - Short draught keel	4 855 kg	10,703 lbs
• Air draught	23,95 m	78'7"
• Light displacement	16 900 kg	37,258 lbs
• Fuel capacity (standard)	400 L	106 US Gal
• Fuel capacity (Optional equipment)	200 L	53 US Gal
• Fresh water capacity (standard)	694 L	183 US Gal
• Fresh water capacity (Optional equipment)	324 L	86 US Gal
• Engine power	80 HP	80 HP
	110 HP	110 HP

## ARCHITECTS / DESIGNERS

- Naval Architect: Berret Racoupeau Yacht Design
- Interior design: Nauta Design

## CE CERTIFICATION

- Category A - 12 people
- Category B - 14 people
- Category C - 16 people

## STANDARD SAILS DIMENSIONS

• Mainsail	67,00 m <sup>2</sup>	721 sq/ft
• Furling mainsail	53,00 m <sup>2</sup>	570 sq/ft
• Genoa (105 %)	66,00 m <sup>2</sup>	710 sq/ft
• Asymmetrical spinnaker	200,00 m <sup>2</sup>	2,153 sq/ft
• Code 0	116,00 m <sup>2</sup>	1,249 sq/ft
• Self-tacking jib	53,00 m <sup>2</sup>	570 sq/ft
• Staysail	35,00 m <sup>2</sup>	377 sq/ft
• I	20,93 m	68'8"
• J	6,60 m	21'8"
• P	19,85 m	65'1"
• E	5,90 m	19'4"

**STANDARD EQUIPMENT****CONSTRUCTION**

- Design in accordance with European Directive requirements and according to CE certification
- Infusion hull (Polyester / Sandwich balsa wood)
- Structural single skin infusion inner moulding (Fabrics - resin) bonded to the hull
- Injection moulded deck in glass fibre/balsa sandwich, covered with "diamond-point" non-slip coating
- Infusion single-skin GRP injection inner deck moulding
- Deck hull joint screwed, bonded and banded with 1 solid wood bulwark
- Cast iron keel fixed with bolts and stainless steel backing plates
- Hung rudder with stainless steel stock
- White coloured hull - Grey metal hull graphics
- 8 large hull ports

**DECK EQUIPMENT****RIGGING**

- Standard mast 9/10 anodized aluminium installed on the deck, 2 aft-swept spreaders
- Anodised aluminium boom
- Discontinuous stainless steel standing rigging
- 2 Backstays with bottlescrews
- Rigid boom vang with tackle
- Genoa furling system with drum on the deck
- 2 Stand Up blocks for mainsail on fixed composite arch
- 2 Genoa tracks with piston adjusted traveller cars
- 2 Genoa sheet turning blocks
- Rigging run back to cockpit (except boom topping lift)
- Complete running rigging: Main halyard, genoa halyard with clutch on mast and cleat, Boom topping lift with cleat on mast, Mainsheet, 2 Genoa sheets 2 rapid reefing lines, 1 manual reef
- 11 Jammers
- 2 lockers for rope tails near helm stations

**WINCHES**

- 2 Self-tailing genoa sheet winches (H60.2 STC)
- 2 Self tailing coachroof winches (H46.2 STC)
- 2 Aluminium winch handles Speed Grip
- 2 Winch handle boxes

**HALYARDS**

Completely hidden

- GRP halyard cover from mast foot to the back of the cockpit

**SAILS**

- Furling genoa with UV protective strip
- Mainsail (classic) with logo full batten, 4 batten sleeves, with slides
- Lazy Jack and Lazy Bag Natural colour

**MOORING LINES - MOORING**

- Self-draining chain locker with eye bolt for bitter end
- 12 V - 1500 W vertical electrical windlass - Remote control
- 8 Aluminium mooring cleats, Length: 400mm / 1'4" - Stainless steel deck line protection

**SAIL LOCKER**

- Access through deck hatch T70, Passage width: 62 cm / 2'
- Stainless steel ladder
- Shelving
- Direct access to the anchor well, Panel: T44

**SAFETY ON DECK**

- 1 Open stainless steel forward pulpit
- 2 Stainless steel pushpits
- 1 Lifebuoys support bracket
- 1 Outboard engine bracket
- Ring for flag welded on pushpit
- Double guardrail and stainless steel stanchions, 750mm / 2'6" - Openings in guardrail to port and starboard

**COCKPIT**

- Self-draining cockpit
- 2 Cockpit locker
- 2 Lockers in cockpit sole beneath helm's feet
- 1 Liferaft locker under helm seat (0,95 m x 0,42 m x 0,59 m (Deep) / 3'1" x 1'5" x 1'11" (Deep))
- 1 Gas locker for bottle(s) in cockpit sole
- Natural solid wood slatted cockpit benches
- 2 Steering wheel consoles: Stainless steel steering wheels - 900 mm diameter - Leather covered - Steering gear at the helm station - metal cable transmission system - Cup holder in stainless steel
- 2 Deck access points to tiller system + Power supply access hatch
- 1 Emergency tiller
- 2 Steering compass
- Engine throttle and control panel to starboard
- Polyester cockpit table - 2 Leaves - 2 side tables at the end of the table - miscellaneous locker - 1 Cooler - 1 Stowage - 2 large stainless steel handrails - 12 V socket - lamp with shade
- Hot/cold water cockpit shower
- 1 Fixed composite arch - Integrated lights LED - 4 Handrails
- 1 shore supply socket to starboard
- 2 sunbathing areas to either side of the companionway
- 2 Hinged PMMA companionway doors - Sliding hatch made of PMMA

**SWIM DECK / STERN DECK**

- Fully opening transom, convertible to bathing platform (2,85 m x 0,77 m / 9'4" x 2'6")
- Electrically controlled opening
- Natural solid wood decking on swim platform
- 1 Stainless steel bathing ladder, folding - solid wood steps

**INTERIOR****Bathrooms 3 cabins 2 version - standard**

- Woodwork Alpi Mahogany
- Parquet type laminated floors
- Fabric hull linings in saloon and cabins
- Interior upholstery, in fabrics
- Marine mattresses in the cabins

**COMPANIONWAY**

- Headroom: 1,97 m / 6'6"
- Wooden saloon companionway with moulded wood suspended steps with non-slip surface
- 2 Leather covered stainless steel handrails



## SALOON

- Headroom: 1,98 m / 6'6"
- To starboard: Saloon bench seats, Removable backrest - double density foam
- Saloon table in 1 piece - Varnished wood top with inlay - 2 Aluminium legs
- to port: Large sofa (2 m / 6'7")
- Mirror on bulkhead, at base of companionway
- Cupboards - Shelves and stowage along the hull - Storage under bench seats
- Shelving with chrome fiddles
- 2 Panoramic deck house windows with concertina blinds
- 2 Hull portholes with curtain
- 2 Opening portholes on coaming in side windows
- 2 Flush deck hatches with mosquito blind
- 2 Stainless steel handrails, on deckhead

## CHART TABLE - STARBOARD

- Table with flap - Moulded wood fiddle - Brown leather trim
- 1 modulable seat (0,49 m - 1,16 m / 1'7" - 3'10") with pivoting backrest
- Switch panel on bulkhead for access to electrical functions
- Navigation instrument panel (without instruments)
- 1 Reading light, flexible and multi-directional
- 1 Overhead light

## GALLEY - PORT SIDE

- Headroom: 1,95 m / 6'5"
- U-shaped galley
- Kerrock grey worktop
- 1 Sink in grey Kerrock - moulded into the work surface - 1 Mixer tap with hot/cold water under pressure
- 1 Gas cooker 2 burners - Stainless steel oven on mountings - 1 Stowage, beneath the oven
- 1 12 V 100 litre ice box, top opening
- 1 12 V 130 litre refrigerator, front opening
- Fitted lockers and closed shelving (Shelving, Bin)
- 1 Base cabinet: 3 Drawers - 1 Stowage
- Storage space along the hull
- 2 Opening ports on coaming with curtains on side windows
- 1 Opening deck hatch

## FORWARD CABIN

- Headroom: 1,93 m / 6'4"
- Central double bed (2,10 m x 1,82 m x 1,14 m / 6'11" x 6' x 3'9") Island bed type, mounted on gas struts
- 2 flexible and multi-directional reading lights at bedhead
- 1 full width mirror above bedhead
- Hanger closets - Valet tray - Shelving - Base cabinet - Storage space under bed
- 1 chest of drawers, 4 drawers with sliding upper surface to function as either a desk or dressing table with a special built-in laptop stowage, built-in power socket. Removable seat with floor fixing system. Mirror on bulkhead above chest of drawers
- 2 Flush deck hatches with mosquito blind
- 2 Hull portholes with curtain
- 2 fixed windows to forward end of coachroof with built-in blinds

## FORE HEAD

Completely built in to the cabin with:

### To starboard

- 1 Pearl grey GRP basin built into the grey Kerrock work surface, Hot/cold water mixer tap. Storage space under the basin, 2 shelves
- 1 Bathroom storage cabinet
- 1 Mirror
- 1 Glass shower cabin with flush access and stowage on the bulkhead, Grey Kerrock work surface with self-draining stowage tray. 1 Natural wood seat. Shower base in pearl grey GRP. Grey laminated bulkhead
- 1 Flush deck hatch with mosquito blind

### to port

- Separate manual marine WC
- 1 80 L / 21 US Gal rigid holding tank
- 1 Pearl grey GRP basin built into the grey Kerrock work surface, Hot/cold water mixer tap, with hose for use as shower
- Shower base in pearl grey GRP. Grey laminated bulkhead
- 1 Bathroom storage cabinet, Mirror
- Toilet accessories
- Storage space along the hull
- 1 Flush deck hatch with mosquito blind

## STARBOARD AFT HEAD COMPARTMENT

- Headroom: 1,91 m / 6'3"
- Access through saloon
- Separate shower - 1 Hot/cold water mixer tap - Stowage on bulkhead - Grey Kerrock work surface with self-draining stowage tray. Shower base in pearl grey GRP
- 1 Manual toilet
- 1 80 L / 21 US Gal rigid holding tank
- Basin - 1 Hot/cold water mixer tap
- 1 Bathroom storage cabinet
- Storage space under the basin
- 2 Mirrors
- Toilet accessories
- 1 Opening portlight with curtains in side windows in the coaming

## STARBOARD AFT CABIN

- Headroom: 1,95 m / 6'5"
- 1 Double bed (2,03 m x 1,37 m x 1,70 m / 6'8" x 4'6" x 5'7")
- Cupboards, Hanging locker, Closed shelving, Stowage on both sides of berth
- 1 Large size hull port with curtain
- 1 Opening deck hatch with mosquito blind
- 1 Opening cockpit port with curtain
- 1 window onto cockpit - beneath the lounger

## PORT AFT CABIN

- Headroom: 1,95 m / 6'5"
- 1 Double bed (2,03 m x 1,18 m x 1,50 m / 6'8" x 3'10" x 4'11")
- 1 Plenty of stowage space, Beam: 106 cm / 3'6". Upper part: 1/3 Hanging locker, 2/3 shelves. Lower part: Large drawers
- Closed shelving, stowage along the length of the berth
- Cupboards, Hanging locker, Closed shelving
- 1 Large size hull port with curtain
- 1 Opening deck hatch with mosquito blind
- 1 Opening cockpit port with curtain
- 1 window onto cockpit - beneath the lounger

## Bathrooms 3 cabins 3 version

### SALOON

- Headroom: 1,98 m / 6'6"
- Length of port settee into galley extension: 1,42 m x 0,82 m / 4'8" x 2'8"
- Starboard saloon identical to the standard version

### PORT AFT CABIN

- Headroom: 1,95 m / 6'5"
- 1 Double bed (2,03 m x 1,18 m x 1,50 m / 6'8" x 3'10" x 4'11")
- 1 Hanging locker, Beam: 40 cm / 1'4"
- 1 Large size hull port with curtain
- 1 Opening deck hatch with mosquito blind
- 1 Opening cockpit port with curtain
- 1 window onto cockpit - beneath the lounger



## AFT PORT HEAD COMPARTMENT

- Headroom: 1,90 m / 6'3"
- Access through saloon and port aft cabin
- Shower - Stowage on bulkhead
- 1 Manual toilet
- 1 80 L / 21 US Gal rigid holding tank
- Basin - 1 Hot/cold water mixer tap
- 2 Mirrors
- Toilet accessories
- 1 Opening portlight with curtains in side windows in the coaming

## ENGINE

- Engine Yanmar Diesel:
  - 80 HP/80 HP, Sail Drive, Common Rail
  - or
  - 110 HP/110 HP, Propeller shaft, Common Rail (optional extra)
- Engine control - Control panel in cockpit starboard
- Engine compartment: Soundproofing foam - Ventilation: 2 air intakes and 1 pressured air outlets
- 1 Alternator 12 V / 125 Ah
- 2 Rotation moulded diesel tank 200 L / 53 US Gal (under port aft berth and Starboard) - Electronic gauge - Low level alarm - 2 Deck fillers
- Filters: Sea water - Diesel - Water separator
- Fixed three blades propeller
- 1 Engine access through companionway (opening with 2 gas struts) - 2 Engine access through aft cabins

## ELECTRICITY

- 12 V circuit
- 4 service batteries (140 Ah) - 1 Engine battery (110 Ah)
- 1 Power distributor
- 1 60 Ah Battery charger
- 12 V Electrical panel (Fuses - Voltmeter - Water gauge - Fuel gauge - Battery warning - Fuel warning - Water warning)
- 7 220 V Sockets
- 2 12 V Sockets
- Lighting: Overhead lights - Reading lights - Reading light, flexible and multi-directional
- Navigation lights: 1 Forward and aft navigation lights - 1 Engine navigation light / Spreader light forward of mast - 1 Anchor light on masthead
- Wire runs for options cables

## PLUMBING

- 1 rotomoulded freshwater tank (324 L / 86 US Gal, Starboard saloon) - 1 rotomoulded freshwater tank (330 L / 87 US Gal, Forward cabin) - 2 Deck fillers - Separate tank filling - Tank selection with "¼ turn" by-pass valves
- Pressurised electric water pump - Expansion tank - Inline filter
- 40 L / 11 US Gal Electric calorifier (engine start)
- 1 Rigid 80 L / 21 US Gal black water holding tank for each WC
- Delayed shower draining and electric shower drain pumps
- 1 Electric bilge pump - 1 Manual bilge pump
- 1 Electric ice box drain pump

## GAS

- 1 Gas bottle box in the cockpit (Diameter 0,34 m x 0,53 m / 1'1" x 1'9")
- Regulator and safety tap



## TRIM LEVEL

	ESSENTIAL	EXCLUSIVE
<ul style="list-style-type: none"> <li>• Bow nose with built-in mooring and bowsprit stay</li> <li>• 1 Port electric coachroof winch - H46.2 STCEH</li> <li>• Releasable forestay chainplate</li> <li>• Stainless steel beading for fenders in cockpit locker</li> <li>• Microwave</li> <li>• 2 USB sockets at the chart table to recharge mobile devices</li> <li>• Hifi: Fusion + Interior loudspeakers &amp; Waterproof exterior speakers</li> <li>• Storage space(s) under the floor</li> <li>• 12/220 V, 2 kVA converter</li> <li>• Gel batteries</li> <li>• 2 140 amperes additional service batteries</li> <li>• 1 40 amperes Additional battery charger</li> <li>• LED: Navigation light, Interior lighting</li> </ul>	<ul style="list-style-type: none"> <li>•</li> <li>•</li> <li>•</li> <li>•</li> <li>•</li> <li>•</li> <li>•</li> <li>•</li> <li>•</li> <li>•</li> <li>•</li> <li>•</li> <li>•</li> <li>•</li> </ul>	<ul style="list-style-type: none"> <li>•</li> <li>•</li> <li>•</li> <li>•</li> <li>•</li> <li>•</li> <li>•</li> <li>•</li> <li>•</li> <li>•</li> <li>•</li> <li>•</li> <li>•</li> <li>•</li> </ul>
<ul style="list-style-type: none"> <li>• Cockpit sole natural solid wood</li> <li>• Polyester/wood cockpit table + White PVC protective cover</li> <li>• 12V refrigerator unit in cockpit table</li> <li>• Cockpit: Leather covered stainless steel handrails</li> <li>• 2 Sunbed mattresses for companionway</li> <li>• Seawater deck wash pumps</li> <li>• Tipping skirt remote control</li> <li>• Upgrade - Bose Acoustimass 3 speakers in saloon</li> <li>• Galley: Stainless steel 3 burner oven/grill cooker on Luxe mounting</li> <li>• Galley: Top opening 12 V cool box in ice box (Freezer)</li> <li>• Saloon and Galley: LED indirect lighting</li> <li>• Cabins: Automatic lighting in hanger closets</li> </ul>		<ul style="list-style-type: none"> <li>•</li> <li>•</li> <li>•</li> <li>•</li> <li>•</li> <li>•</li> <li>•</li> <li>•</li> <li>•</li> <li>•</li> <li>•</li> <li>•</li> <li>•</li> <li>•</li> </ul>

## PACKS

### ELECTRONIC B&G PACK

#### A Pack

- Helm consoles to port and starboard:
- 1 GRP pod for navigation instruments on stainless steel stand (built-in stainless steel handrail)
- 1 Zeus 9" wide Multifunction screen (GPS, Chart plotter, Chart reader - Navionics Silver cartography included)
- Wind Sensor (Windvane, Anemometer)
- Sensor (Log, Speedometer, Temperature)
- Wifi interface
- PC interface

#### B Pack

- Helm consoles to port and starboard:
  - 1 2nd polyester support for navigation instruments
  - 1 Zeus 9" wide Multifunction screen (GPS, Chart plotter, Chart reader - Navionics Silver cartography included)

#### Pilot pack

- AC42 autopilot + Control at steering station
- WR10 Wireless autopilot remote control

### PERFORMANCE PACK

- Performance Incidence D4 Sails
- German system (Two-way mainsheet at the helm station)

### SILVER EDITION PACK

- Generator
- Bow thruster
- Pilot pack
- Electric genoa sheet winches - H60.2 STCEH
- 2 White composite steering wheels
- Windlass control in cockpit with chain counter
- Genoa sheet track leads adjustable from the cockpit
- Hull decorated

**OPTIONS****Navigation electronics: B&G**

- 4G Radar
- Chart table: 16" Multifunction screen + ZC2-series remote keyboard
- Chart table: Fixed RS90 VHF, AIS receiver function + H50 cockpit handset
- AIS 400
- Forward Scan Sensor (Forward underwater vision)

**Rigging - Sails**

- Anodised furling mast with mylar Taffetas main and genoa (in lieu of standard)
- Grey lacquered canoe boom
- Electric genoa furling system
- Asymmetrical spinnaker rigging + Code 0 rigging
- Self-tacking jib hardware
- MylarTaffetas (Code 0) with furling drum
- Hydranet self-tacking staysail with manual furling + Fixed forestay
- Hydranet sail for classic mast (in lieu of standard)
- Hydranet self-tacking jib (replacing genoa)
- Releasable forestay chainplate
- Hydraulic backstay\*
- Genoa sheet track leads adjustable from the cockpit
- 2 flag halyards

\* *Except on mast with in-mast furling*

**Winches**

- 2 Electric genoa sheet winches - H 60.2 STCEH (in lieu of standard)
- 1 Starboard electric coachroof winch - H46.2 STCEH
- 1 Rewind rope handling winch

**Hull - Deck - Cockpit**

- Blue grey or pearl grey hull
- Metallic hull paint
- Gangway (Besenzoni) - Integral hydraulic crane
- Slatted solid wood side decks
- Slatted solid wood on coachroof
- 2 Opaque white PMMA deck panels in the saloon, in lieu of standard
- Silver Coachroof sprayhood
- Silver Cockpit Bimini
- Luxe coachroof sprayhood, Cadet Grey
- Luxe bimini, Cadet Grey
- Complete Luxe cockpit closing, Cadet Grey
- Covers pack Luxe (Table + Steering consoles), Cadet Grey
- White PVC steering wheel covers
- Dark Narval Cockpit cushions
- Dark Narval forward sun mattress
- Bow thruster
- 3 feathering blades propeller
- 2nd arch with davits and instrument base, aluminium, lacquered white
- Moorings lines, Mooring, Fenders
- White or black composite steering wheels
- 1 GRP support at each helm console to hold
- Windlass control in cockpit with chain counter
- Shore freshwater supply
- Underwater light
- Windex Windvane



## Interior equipment

- Interior woodwork: Alpi matt light oak
- Luxe saloon swivel foldaway table on electric leg
- Interior upholstery, according to swatches: Fabrics, Leather or Ultraleather
- Upholstery padding (Saloon and Cabins): Anthracite Grey or Taupe
- TV LED 32" + Player Fusion (Bluetooth, USB, Dvd, MP3) in the saloon
- TV LED 24" + Player Fusion, in master cabin
- Dishwasher - 6 people
- Icemaker
- Washer dryer (5 kg / 220 V)
- Sandblasted finish shower screen, Forward cabin (in lieu of standard)
- Pure Brown carpet
- Double berth in saloon
- Slat mattresses
- Electronic safe
- Mosquito nets
- Electric toilet
- Extractor hood
- Galley: Sea water/fresh water foot pump
- Extra water tank, in the saloon (324 L / 86 US Gal)
- Additional diesel tank (200 L / 53 US Gal)
  
- 9 KVA 220 V / 50 Hz Generator - with cocoon
- Heating (water system)
- Chilled water air conditioning (220 V / 50 Hz)
- Heating extension to forepeak cabin
- Air conditioning extension to forepeak cabin
- Water maker 60 L / 16 US Gal/h

## Forepeak cabin

In place of the sail locker:

- Access through deck hatch T70, Passage width: 62 cm / 2' - Stainless steel ladder
- Headroom: 1,84 m / 6', beneath deckhead
- 2 Bunk berths (Bottom bunk: 2,00 m x 0,70 m - 0,46 m / 6'7" x 2'4" - 1'6" - Top bunk: 1,92 m x 0,77 m x 0,43 m / 6'4" x 2'6" - 1'5", raises up to allow more space)
- Foam mattress - PVC cover
- 1 Cupboard: 2 shelves - 1 high shelf
- Manual toilet + 50 L / 13 US Gal rigid holding tank - Stainless steel basin - Storage space under the basin - 1 Mirror - Shower head mixer tap (hot/cold water) - Shower tray with curtain
- Regulator and safety tap

